

WELCOME TO THE SPRING NEWSLETTER 2011

Breaking News

'Art in the City' permanent sculpture display sites will be a legacy for Bath

In 2012, from May 26th to July 1st, the full collection of 30 bronze sculptural studies will be exhibited at the Victoria Art Gallery Bath. In addition to the bronze artworks depicting Olympic and Paralympic sports at least 10 additional life-sized sculptures will be on display during the same period in Bath's public spaces. This exciting city-wide sport themed sculpture trail, will show a variety of contemporary sculptural styles set against Bath's exceptional and handsome architectural backdrop.

All of the sculptures for the trail either already exist or are being worked on but the sites where the sculptures will be displayed still need to be prepared. Three of the sculptures will be scaled-up versions of the sculptural studies in the collection, the remainder will be the work of Guest Artists working in a diverse range of mediums and styles who have been invited to produce sculptures for the project.

The project's cultural legacy will be two permanent sculptures honouring Bath's Olympic heroes and six 'Art in the City' sculpture sites, which will become permanently designated areas for public sculpture exhibitions in 2013 and beyond. The sites will be located in Parade Gardens, Queen Square, Sydney Gardens, Victoria Park, Green Park and Saw Close.



A preview exhibition of 10 of the bronze sculptures is currently on display and open to the public in the stunning reception of CircleBath until 24th March.

The full collection of 30 bronze sculptures will also be exhibited in Oxford at the Ashmolean Museum from 19th March to 20th May 2012 and London at the Oxo Tower Gallery from 31st July to 13th August 2012. All sculptures are for sale and the profits from the project will be used to support disadvantaged and disabled young people through the life changing work of the Youth Sport Trust and ParalympicsGB.

Preview exhibitions of part of this collection are being organised to promote the main exhibitions in 2012. These include in 2011; Canada Square and Salisbury Square London from 25th March to end of May, The Bristol Gallery from 6th to 26th June and the Terminal 5 Gallery at Heathrow, 1st July to end of Sept. There are still great opportunities for organisations to host an exhibition of these bronze sculptural studies in the run up to 2012, please contact riann@artattheedge for more information.

Photograph by Marko Dutka

More breaking news

Youth Sport Trust Conference

We were delighted to be invited to exhibit a selection of the bronze sculptural studies, at the Youth Sport Trust's renowned Sports College Conference in Telford on 9th February.

The conference was attended by delegates from around 500 Schools including Specialist Sports Colleges and Academies. Guest speakers included the Rt Hon Jeremy Hunt MP, Secretary of State for Culture, Olympics, Media and Sport, who confirmed the Government's commitment to a new strand of school sport funding to support the delivery of the nationwide School Games initiative to boost the numbers of young people taking part in competitive sport across the country.



The exhibition of 10 of the sculptures was set up in the registration area and was fantastically well received by the delegates and appreciated enthusiastically by all ages!

Hundreds of visitors stopped to admire the sculptures and commented particularly on the beautiful quality of the artwork and on how interesting they found the different approaches to depicting sports with a variety of sculptural styles. There was also great interest in the open sculpture competition for the 30th sculpture in the collection. This will be a Paralympic Sport theme and we are keen to encourage young sculptors to enter. Full details are on our website.

During the evening the sculptures were exhibited on the top tables at the Gala Dinner, when Baroness Sue Campbell CBE the Chair of the YST, introduced some inspiring individuals from the world of sport and the annual awards to schools were announced.



Sculpture Update

Charlotte Barker's 'Paralympic Sprinting'

The fascinating process of a 'marriage of art and sport' in the project has been captured on film by Louise Heron of Reybridge Films. Charlotte Barker's sculptural study for the bronze collection is a collaboration with the young Paralympic athlete Libby Clegg who competes in the 100m and 200m sprints. Libby is the subject of a 60 mins documentary film, which BBC Scotland have commissioned Reybridge Films to produce. It will be aired on BBC1 Scotland this summer and hopefully UK wide later in the year.

Louise told us, " **'Running Blind'** is a personal story, learning from Libby what life is like not only for a professional athlete, but for a young woman who is severely visually impaired, living a normal life in 21st century Britain. It follows the athlete from July 2010 at the Gateshead Disability Athletics Challenge to her recent success in January 2011, winning the gold in 100m and bronze in 200m at the IPC World Championships in Christchurch NZ. As part of the film Libby worked with sculptor Charlotte, describing to her the experience of sprinting without vision and with a guide. Charlotte has shared her working drawings and models with Libby throughout and has acted on Libby's suggestions whilst explaining her own artwork and the sculptural techniques she uses."



Charlotte's finished maquette before going to Pangolin for casting

Charlotte saw the commission as an interesting challenge to not only produce a public artwork but also to consider how to depict a sport for the visually impaired as a piece of visual art, she said, "This meant that the piece required a new dimension, one that would be tactile and devoid of undetectable detail."



Her aim has been to capture the synchronistic relationship between Libby and her guide runner as well as simply making the general public more aware of how this sport takes place.

Libby herself is passionate about promoting sports and disability sport in schools and as a former pupil of the Royal Blind School in Edinburgh and a Royal Blind Ambassador she inspires many young people to become more active. Libby is extremely pleased with the final concept and feels it is evocative of her 100m sprint with Mikail Huggins her guide.

Guest Artist Focus

Nikki Taylor



'Bath Bullet' Jason Gardener MBE is used to team work as a member of the British 4 x100 m relay squad who struck gold in the 2004 Athens Olympics, but he teamed up with artist Nikki Taylor for Art at the Edge in another 'marriage of art and sport'.

Nikki creates her artwork from wire mesh, starting the physically demanding and painstaking process by taking photographs and detailed measurements to help her model the wire mesh by hand into an accurate study of her subject. The sculpture will depict the athlete in a dynamic sprinting pose and will be displayed outside in Bath during the summer of 2012.

Having studied figurative sculpture at Wimbledon School of Art, Nikki has exhibited widely and in 2009 had her work included in the Thomas Hoblyn Garden at the prestigious Chelsea Flower Show.

Since retiring from competitive athletics Jason launched Bullet Management Group (BMG) in 2010 which specialises in brand marketing, consultancy and motivational speaking services. He also acts as a School Sport Ambassador for the Youth Sport Trust.



An early private preview of Nikki's work for the project will be held on May 5th this year in the beautiful setting of the Thermae Baths and will include a sculptural study of Jason and a study of Olympic Diver Tom Daley. Nikki met Tom last year when he took time out of his busy training schedule and the recently completed dynamic artwork pictured above will also grace the streets of Bath during the city wide public sculpture trail in the summer of 2012.

Sculpture Competition Update

We have been very pleased by the early interest in the sculpture competition, which is to find the 30th sculpture to join our commissioned bronze collection, and sculptors who work in a fascinating range of styles have registered.

As the competition is open to all ages we are keen for young sculptors to have the opportunity to enter so are delighted to have had some schools register and that they are also interested in using participation as a chance to do cross curriculum work in art, sport and disability awareness.

We look forward with great anticipation to receiving the images of finished work on the website. The closing date is 1st August, but please don't leave uploading images until the last minute as we would hate to miss entries that are lost due to technical computer problems!

Anyone else interested in entering can find details on our website or contact jane@artattheedge with any questions.



'Strange Meeting'



'The Road Not Taken'

Sculptor John Atkin FRBS who has registered for the competition, has just had his latest sculpture 'The Road Not Taken' unveiled at the International Sculpture Park in China. This follows on from John's great success in winning an Outstanding Award for his sculpture 'Strange Meeting' at the Beijing Olympic Games in 2008.

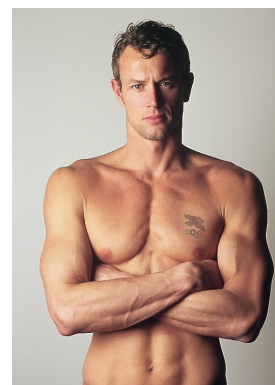
Exhibitions

Commissioned sculptor Jilly Sutton has an exhibition 'Wood carvings, trees and casts' at the Victoria Art Gallery Bath, from 23rd July to 2nd October 2011

Coming Soon ...

Guest artist Ben Dearnley will begin his 'Sculpted' project in April, carving the awesome torso of Olympic swimmer Mark Foster from a gigantic piece of Bath stone. Ben will be working 'live' giving the public the opportunity to see the figure emerging from the stone.

Keep checking the project website for updates.



Photograph by Carlo Chinca

Don't forget

There are still Lottery tickets available with a maximum of 1000 tickets to be sold in this first draw which will take place on 30th June 2011. Tickets are only £10 and can be purchased via the website at www.artattheedge.org or by post via the form below. Full terms and conditions are available on the website.

To order by post please print out and fill in this form and enclose a cheque or postal order for the full amount made payable to; **Art at the Edge CIC** and send them to; **Art at the Edge**, 34 Brock Street, Bath, BA1 2LN.

NAME

ADDRESS

POSTCODE

EMAIL

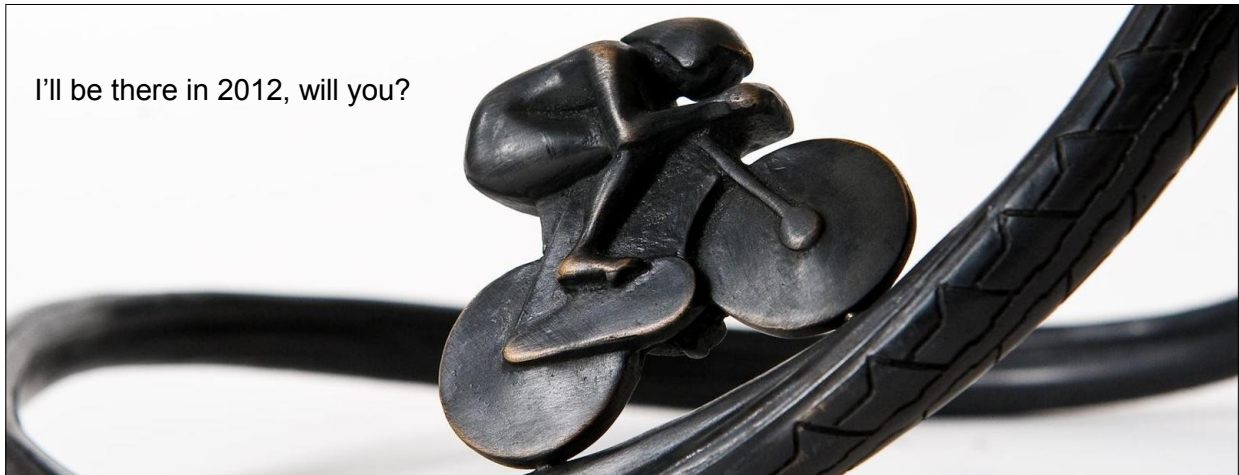
NUMBER OF TICKETS REQUIRED AT £10 EACH

TOTAL AMOUNT ENCLOSED

Checking this box confirms you are a British Citizen over 16 years of age

And finally...

I'll be there in 2012, will you?



Photograph by Neil Thayer